

Acoustic Canopy :

We offer acoustic- canopies designed for quick assembly and dismantling for meeting critical requirement of noise suppression of DG sets, the canopies meet CPCB norms of govt of india for noise pollution and the plant is fully automatic, CNC controlled with automatic conveyerised powder coating facility, Special emphasis is given to the comfort of DG set under extreme weather condition especially in peak summer for this purpose a forced-air circulation system is provided along with separate exhaust for hot air.

Salient Features :

- Weather proof structure that can also be erected in open space, totally water proof, temper proof and temperature proof.
- Anti corrosion treatment to the full structure and body for long- life under adverse weather condition .
- Sound Proofing of the enclosure is done with 25 mm PU foam for better sound reduction.
- High performance sound reduction level to 75 dba at a distance of 1 meter.
- Forced ventilated air- circulation system using axial fan as per engine requirement.
- Separate duct for ventilating hot air coming out of the engine .

Quality Assurance :

- Our strong focus on manufacturing process and quality assurance enables us to supply high quality material and deliver cost effective solutions.
- Our manufacturing practice has been technologically driven and to stay at the forefront of innovation, we continuously invest in Research and Development.
- Our Quality Control involves in all the activities to ensure that all the products sourced and manufactured are in compliance with National and International standards at all stages of inspection. Our highly equipped quality and testing facility enables us to deliver superior quality products and achieve total customer satisfaction.



Corporate office:

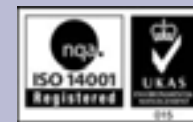
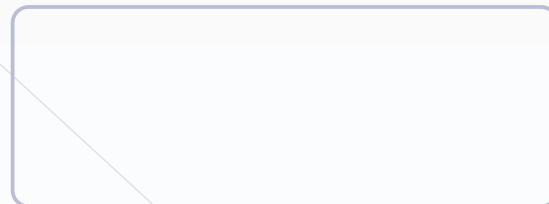
KADEVI INDUSTRIES LIMITED

A1 - A2, Electronic Complex,
Kushaiguda, Hyderabad, A.P. India - 500062.
Telephone: +91 40 27121450, Fax +91 40 27121657
Email: gensets@kadevigroup.com

Works:

S.no 146&147, Ankireddypally, Keesara mandal,
R.R District A.P. India - 501 301 Ph.: 08418 - 284963

Authorised Dealer



ISO 9001-2008 & BS OHSAS 18001-2007 & ISO 14001-2004
CERTIFIED COMPANY



KADEVI INDUSTRIES LIMITED

www.kadevigroup.com

GENERATORS DIVISION

Kadevi Escorts Genset

In 2010, Kadevi made a successful entry in power Generation with its premier range of DG Sets, being manufactured in one of the Asia's largest integrated DG Set plant at Anki Reddy Pally, Near Hyderabad, under the brand name - "Kadevi Generators". The range manufactured at our plant starts from 5KVA and goes up to 45 KVA. The plant is an intergrated manufacturing facility is equipped with the most modern technology including advanced equipments for fabrication 6 Tank Surface Treatment, Powder Coating and State of art PLC Based Testing facility up to 600KW, the first of its kind in India. for testing DG set under full load condition.

Kadevi Generator set is powered by Escorts engines from 10 KVA to 82.5 KVA which is world class engine with low maintenance high fuel efficient with low noise levels.

The wide range of Generators manufactured at Kadevi are marketed through its India network of sales and services offices.

The salient features of ENGINE and DG Set are as under :

- DG set are custom built product to suit site condition ensuring for optimum performance .
- A see through transparent window in front of engine panel for monitoring engine parameters
- State of the art ADI technology for unmatched Power & diesel economy .
- Plateau honed wet liners for low lube oil consumption .
- Designed for 100 % Continuous operation and longer service intervals .
- Class A1 governing with 4 % regulation that gives stable operation in fluctuating load condition
- Efficient cooling mechanism and no frequent top-ups .
- The most fuel efficient in its range .low operating cost .
- Long run overhauls .
- Compact size to fit low space criteria in roof-to p application .
- High reliability with low maintenance .
- Microprocessor based auto-start controller for AMF operation (optional) .
- Remote start and stop facility (optional) .
- In-built event log (optional) .
- Less noise with low vibration.
- Cleaner emissions.
- Meets CPCB norms.
- In-built safety features like HWT, LLOP, LFL, CHF, RWL, and many more.
- Equipped with fire retardant foam.



Technical Specifications

Description	Unit	Values				
DG Set Model	-	KDG15	KDG20	KDG25	KDG30	KDG40
DG Set Rating	KVA	15	20	25	30	40
Canopy Size	LxBxH (mm)	2300x930x1385	2400x930x1385	2400x930x1385	2400x930x1385	2400x930x1385
Battery	Ah	88/100	88/100	88/100	100/120	100/120
Starting System	-	12 V DC	12 V DC	12 V DC	12 V DC	12 V DC
Weight	kg	900	1000	1050	1050	1075
Fuel Tank Capacity	litres	250	250	250	250	250
ENGINE						
Model		G-15	G-20	G-25	G-30	G-35
Rated Power	BHP	22	28	37	43	58
Rated Speed	RPM	1500	1500	1500	1500	1500
No. of Cylinders		2	3	3	3	4
Bore	mm	102	91	105	105	91
Stroke	mm	120	110	120	120	110
Total Displacement	cc	1960	2146	3120	3120	2860
Specific Fuel Consumption	gms/bhp/hr	160	152	155	155	150
Lube Oil Consumption	% of fuel	0.1	0.1	0.1	0.1	0.1
Compression Ratio		17.5 : 1	17.5 : 1	17.5 : 1	17.5 : 1	18.5 : 1
Aspiration		Naturally Aspirated	Naturally Aspirated	Naturally Aspirated	Naturally Aspirated	Turbo Charged
Cooling System	-	Water Cooled	Water Cooled	Water Cooled	Water Cooled	Water Cooled
FUEL INJECTION PUMP		MICO Bosch - Inline Pump, Mech - A1 Governing				
Emission Norms	-	CPCB Compliance	CPCB Compliance	CPCB Compliance	CPCB Compliance	CPCB Compliance
ALTERNATOR	-					
Type	-	Brushless, H Class Insulation	Brushless, H Class Insulation	Brushless, H Class Insulation	Brushless, H Class Insulation	Brushless, H Class Insulation
Frequency	Hz	50	50	50	50	50
Voltage	volts	230/415	230/415	230/415	230/415	230/415



Escorts Engine



600 KW Generator Load Test Bank